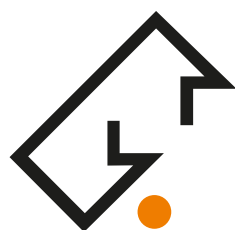




Dividing Units **EDR-EDS**

for EDM Machines



WERKZEUGSYSTEME
MÜLLER GMBH
HOFMANN
MESS- UND TEILTECHNIK

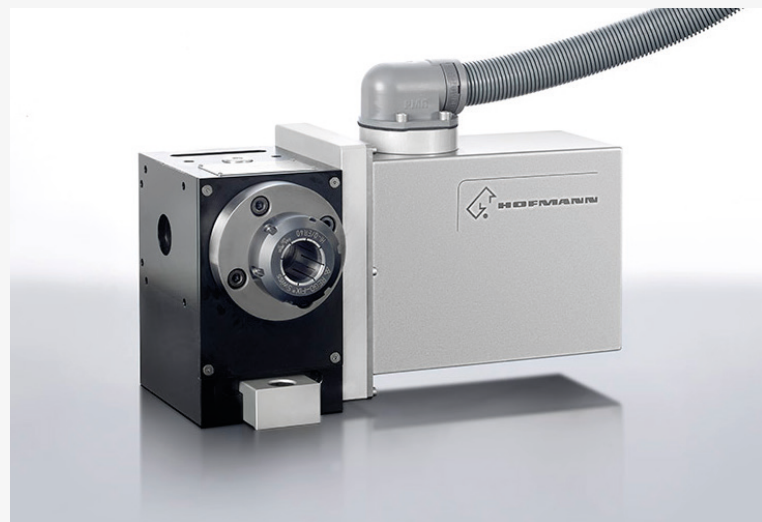


Dividing Units for EDM machines

Single-Axis or Biaxial Dividing Units EDR / EDS

SERIES EDR

- Single-Axis dividing unit can be used with a horizontal or vertical turning axis. They are specially designed for use on EDM machines
- These units are issued with IP67 protection class and use non-corrosive materials to enable use in a corrosive non-conductor.
- Compact, space saving design for heavy duty machining operation
- High flexibility through variable modular system
- Slightly modify to spatial conditions by mounting drive motor at housing left hand or right hand
- Indexing Spindle with bore pattern available to customers specification
- Allow the worm gear to be set to a low amount of Play
- Allows play in the worm gear to be adjusted
- Using of indirect and direct measuring systems in according to needed indexing accuracy
- Earth connection am Gehäuse immediate at the indexing spindle
- Low maintenance due to permanent lubrication



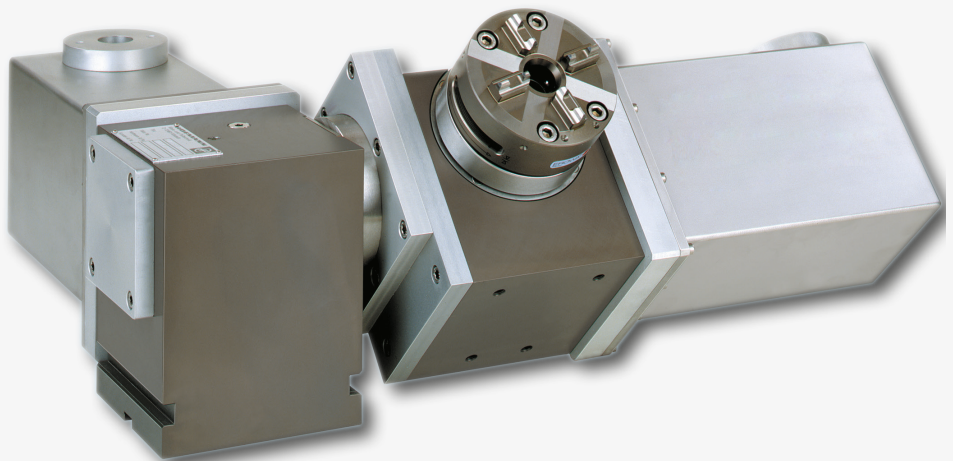
CONNECTION

The connection of the NC-Dividing Unit EDR is made alternatively as:

- Integrated 4th axis with consisted AC-servo motors for existing machine control
- Positioning axis with HOFMANN Single-Axis-Positioning-Control. The connection to the machine control is based on the M-Signal-Function

SERIES EDS

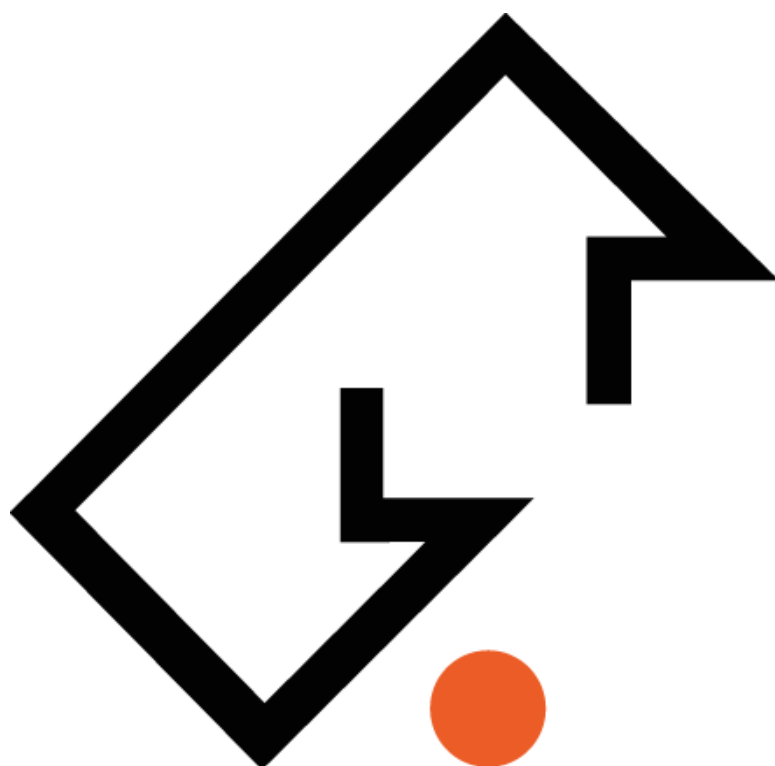
- Swivelling NC-indexing devices for use on EDM machines with horizontal or vertical turning axis consisting of two dividing units of the series EDR
- These units are issued with IP67 protection class and use non-corrosive materials to enable use in a corrosive non-conductor
- High flexibility through variable modular system
- Slightly modify to spatial conditions by mounting drive motor at housing left hand or right hand
- Indexing Spindle with bore pattern available to customers specification
- Using of indirect and direct measuring systems in according to needed indexing accuracy
- Earth connection am Gehäuse immediate at the indexing spindle
- Low maintenance due to permanent lubrication



CONNECTION

The connection of the NC-Dividing Unit EDS is made alternatively as:

- Rotation and tilting axis used as integrated 4th and 5th axis with consisted AC-servo motors for existing machine control
- Rotation and tilting axis used as positioning axis with HOFMANN Two-Axis-Positioning-Control. The connection to the machine control is based on the M-Signal-Function
- Rotation axis used as integrated 4th axis with consisted AC-servo motors for existing machine control. Tilting axis used as positioning axis with HOFMANN Single-Axis-Positioning-Control. The connection to the machine control is based on the M-Signal-Function



Werkzeugsysteme Müller GmbH
Hofmann Mess- und Teiltechnik

Robert-Bosch-Straße 5 | 72124 Pliezhausen
Telefon +49 7127 97558-130 | Telefax +49 7127 97558-015
info@hofmann-mt.de | www.hofmann-mt.com