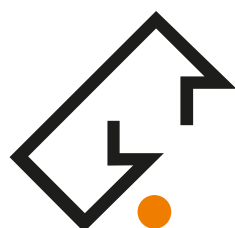


Balancing Stands **ABL/ABS**

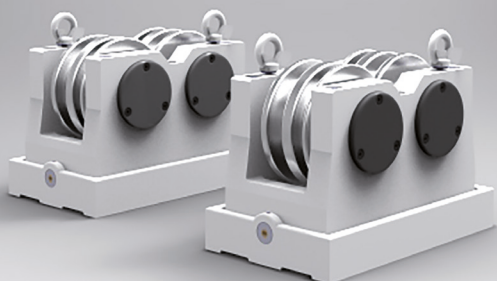


WERKZEUGSYSTEME
MÜLLER GMBH
HOFMANN
MESS- UND TEILTECHNIK



Balancing, concentricity testing, clamping

Balancing Stands ABS / ABL

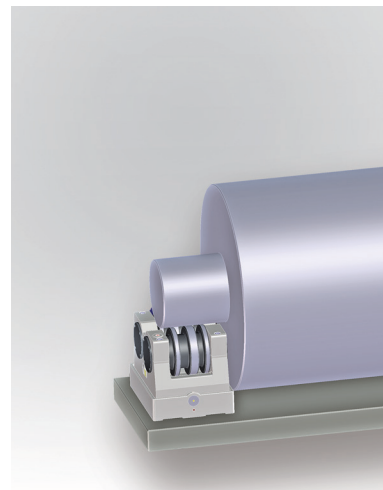


BALANCING STANDS ABS

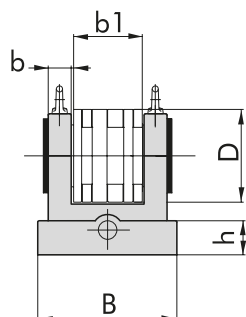
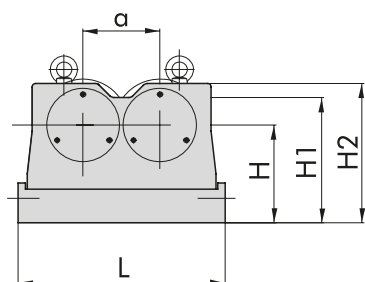
for static balancing of heavy and extremely heavy rotors, or for concentricity tests.

Each set of balancing stands will be supplied as a set of two individual balancing stands, each with two hardened and ground balancing rollers.

The balancing rollers are pivoted in ball bearings and are arranged in an overlapping manner. The balancing rollers's width enables testing bodies to be used with axes of a lesser surface hardness.



Size		ABS-2	ABS-10	ABS-50
Load capacity	(kg)	80 bis 2,000	400 bis 10,000	2,000 bis 50,000
Maximum rotor diameter on rollers	(mm)	150	250	300
Concentricity	(mm)	0.01	0.01	0.01
Set weight	(kg)	66	182	580



Size		ABS-2	ABS-10	ABS-50
a	(mm)	100	126	185
b	(mm)	34	45	82
b1	(mm)	70	114	180
B	(mm)	155	225	360
D	(mm)	120	150	212
h	(mm)	40	55	100
H	(mm)	120	160	254
H1	(mm)	153	200	302
H2	(mm)	180	235	360
L	(mm)	260	340	480

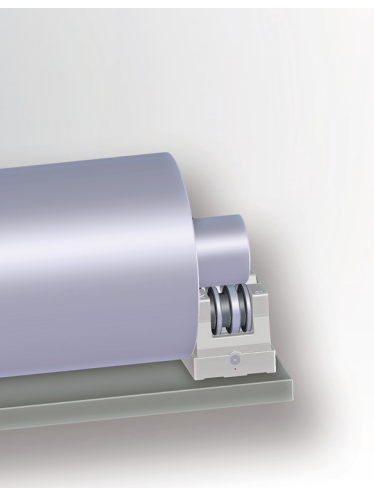


BALANCING STANDS ABL

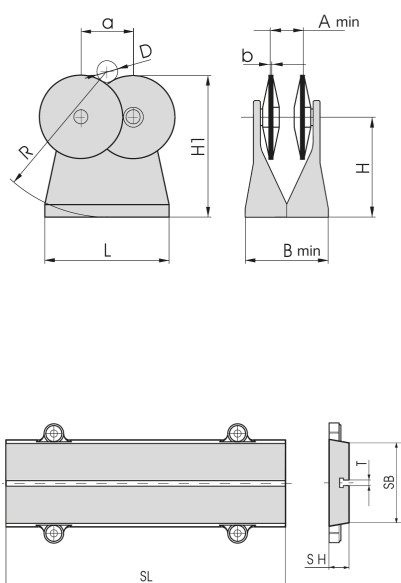
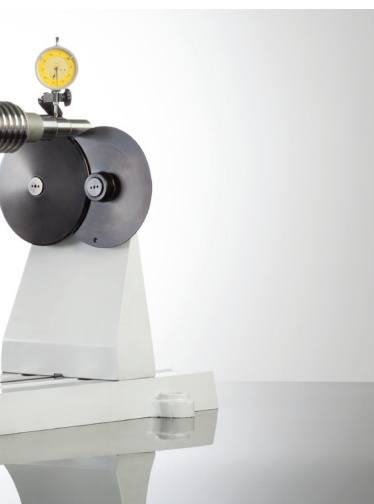
for static balancing of disc-shaped parts or for concentricity tests.

Each set of balancing stands will be supplied as a set of two individual balancing stands, each with two hardened and ground narrow balancing discs.

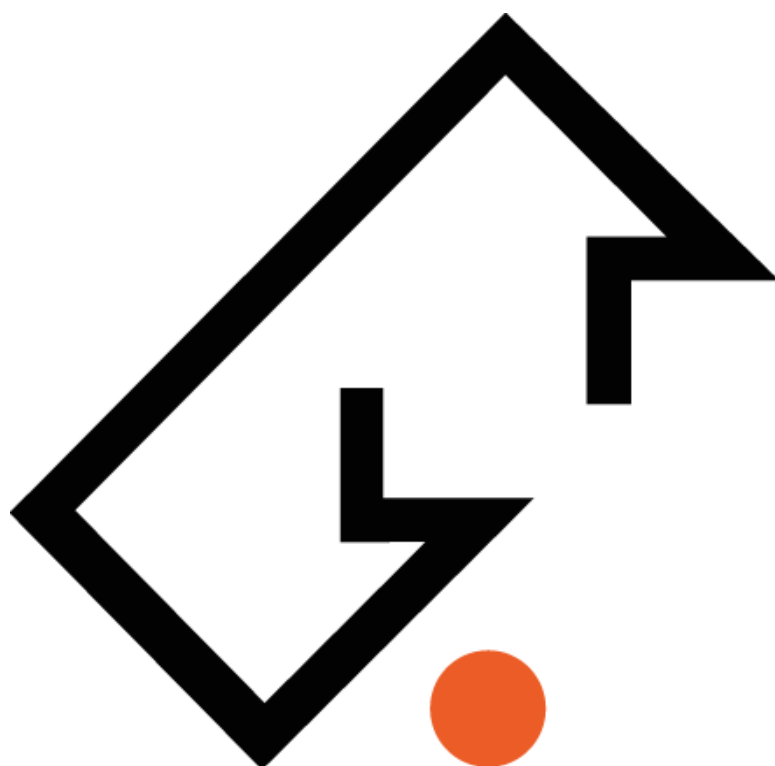
The balancing discs are mounted in ball bearings and are arranged so that they can accommodate even small bearings.



Size		ABL-10	ABL-100	ABL-400
Load capacity	(kg)	0.1 bis 10	5 bis 100	20 bis 400
Maximum rotor diameter on roller discs	(mm)	100	200	400
Concentricity	(mm)	0.005	0.005	0.005
Set weight without any base rail	(kg)	8	20	56
Weight with clamping device	(kg)	9	21	58
Set weight with base rail 1,000 mm	(kg)	43	55	118



Size		ABL-10	ABL-100	ABL-400
a	(mm)	63	100	130
A min	(mm)	45	70	80
b	(mm)	6	9	12
B min	(mm)	120	160	230
D	(mm)	100	160	200
H	(mm)	170	250	380
H1	(mm)	220	330	480
L	(mm)	200	200	360
SB	(mm)	200	200	360
SH	(mm)	50	50	70
SL	(mm)	1,000	1,000	1,000
T	(mm)	14	14	14



Werkzeugsysteme Müller GmbH
Hofmann Mess- und Teiltechnik

Robert-Bosch-Straße 5 | 72124 Pliezhausen
Telefon +49 7127 97558-130 | Telefax +49 7127 97558-015
info@hofmann-mt.de | www.hofmann-mt.com