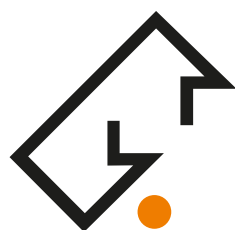


Precision Rotary Tables RH



WERKZEUGSYSTEME
MÜLLER GMBH
HOFMANN
MESS- UND TEILTECHNIK



Dividing manually

Manual Precision Rotary Tables RH

MAIN CHARACTERISTICS

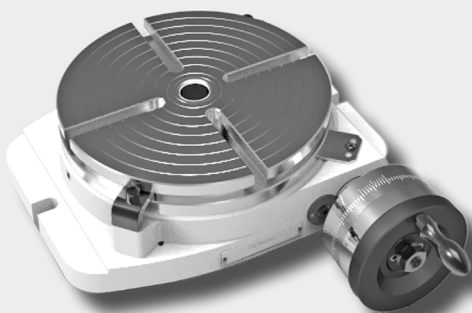
- Manual precision rotary table with compact and space saving design. The high rigidity allows the use for machine tools as well as for measuring applications
- Table plate with 200 mm diameter and 360° graduation scale on the table plate circumference with zero point mark on the housing
- Due to the low height and the light weight, the rotary tables are especially suitable for engraving and milling work
- Manually operated worm gearing with eccentric worm shaft bearing for backlash adjustment or easy disengaging for rapid indexing
- Relief of worm gear by two mechanical down hold clamps running in a notch on circumference of the table plate

DESIGNS

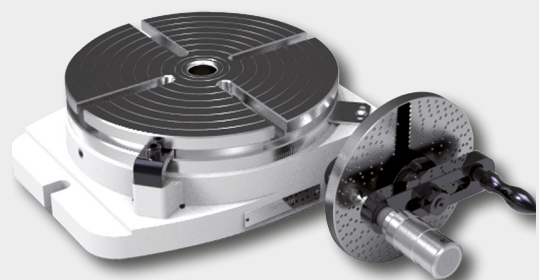
- RH Rotary table with graduating drum and vernier scale for indirect indexing
- RHI Rotary table with dividing plate indexing device for indirect indexing of all divisions up to 50

ACCESSORIES

- Manual three-jaw chuck with intermediate flange to be attached to the table plate
- Hand wheel with micrometer dial and indexing plate device are interchangeable
- Additional direct indexing plate for the indexing plate device for all divisions up to 100 and higher ones, many up to 400, with included adjusting table

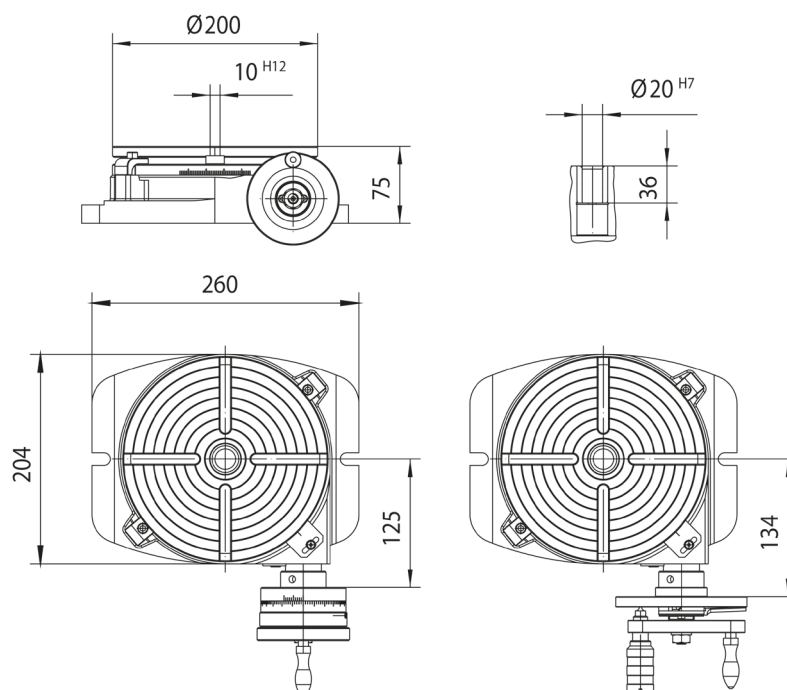


Precision Rotary Table RH-20



Precision Rotary Table RHI-20

TECHNICAL DATA

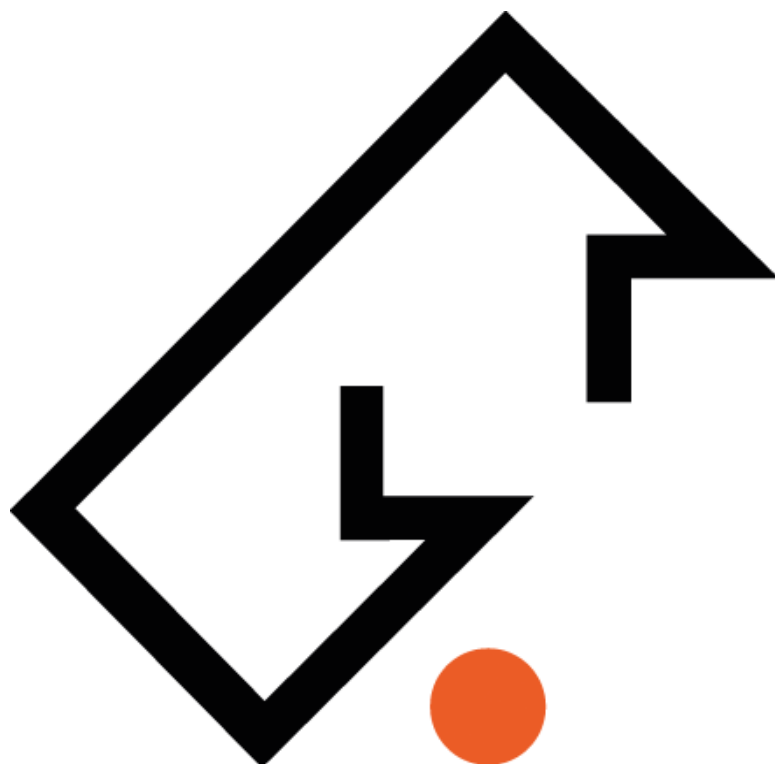


Accuracies

Size		20
Worm gear ratio	(i)	90:1
Indexing accuracy, indirect division	(sec)	± 30
Concentricity of the dividing spindle in the centre bore	(mm)	0.01
Axial runout of table plate	(mm)	0.01
Evenness of table plate	(mm)	0.01
Parallelism of the table plate to base area	(mm)	0.02
Weight	(kg)	19

Load and performance data

Size		20
Maximum load capacity for vertical axis	(kg)	80
Maximum axial force	(kN)	15
Maximum radial force	(kN)	5
Tilting moment indexing spindle clamped	(Nm)	300
Tangential moment with clamping	(Nm)	300



Werkzeugsysteme Müller GmbH
Hofmann Mess- und Teiltechnik

Robert-Bosch-Straße 5 | 72124 Pliezhausen
Telefon +49 7127 97558-130 | Telefax +49 7127 97558-015
info@hofmann-mt.de | www.hofmann-mt.com